

Air Gap Survey

Distance from platform to sea surface

Key features

- Air gap
- Mean Sea Level
- Harmonic analysis

Parker Maritime can establish the distance from a platform topside to the sea surface. The vertical distance between the lowest point of the installation's topside and the lowest astronomical tide (LAT) is defined as the "Airgap".

Distance measurement

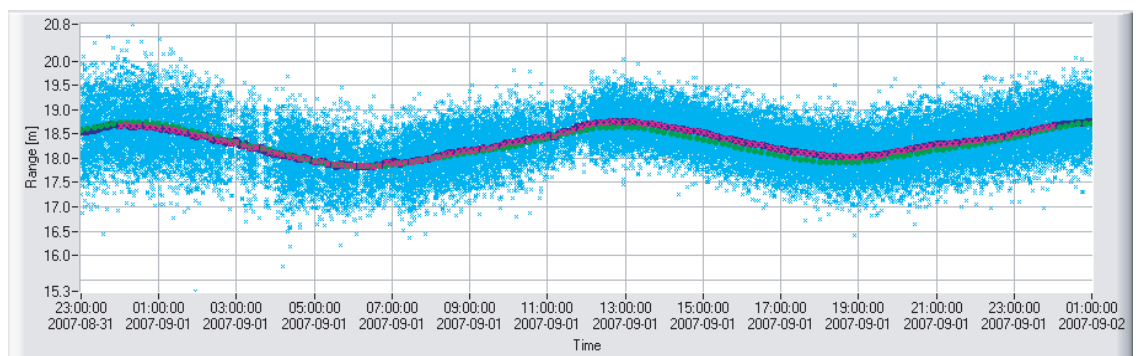
- Laser measurements from platform to sea level
- Distance accuracy better than 20 mm
- Sampling rate is better than every two seconds
- Relative to the installation coordinate system
- Platform inclination survey (optional)
- Air pressure logging



A laser is mounted to measure from a reference onboard the installation. Continuous measurements are done over a period of approximately 35 days.

A special program is used to extract the data and present the sea level over time relative to the installation.

The data is then handed over to Norwegian Mapping Authority, Hydrographic Service for analysis to estimate the Mean Sea Level and LAT.



One day survey of distance to water sea level



sellihca
empowered by Achilles



FPAL
empowered by Achilles



Achilles JQS
empowered by Achilles



Parker Maritime AS
Heiamyra 1
4033 Stavanger
NORWAY

telephone: +47 51 70 85 00
telefax: +47 51 70 85 01
post@parkermaritime.no
www.parkermaritime.no

Contact:
Rolv Johannessen
mob. +47 91 58 00 10