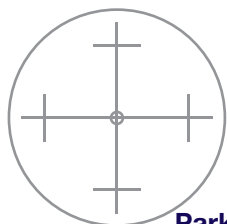


Parker Attitude Control

Heading Calibration and GPS Health Check

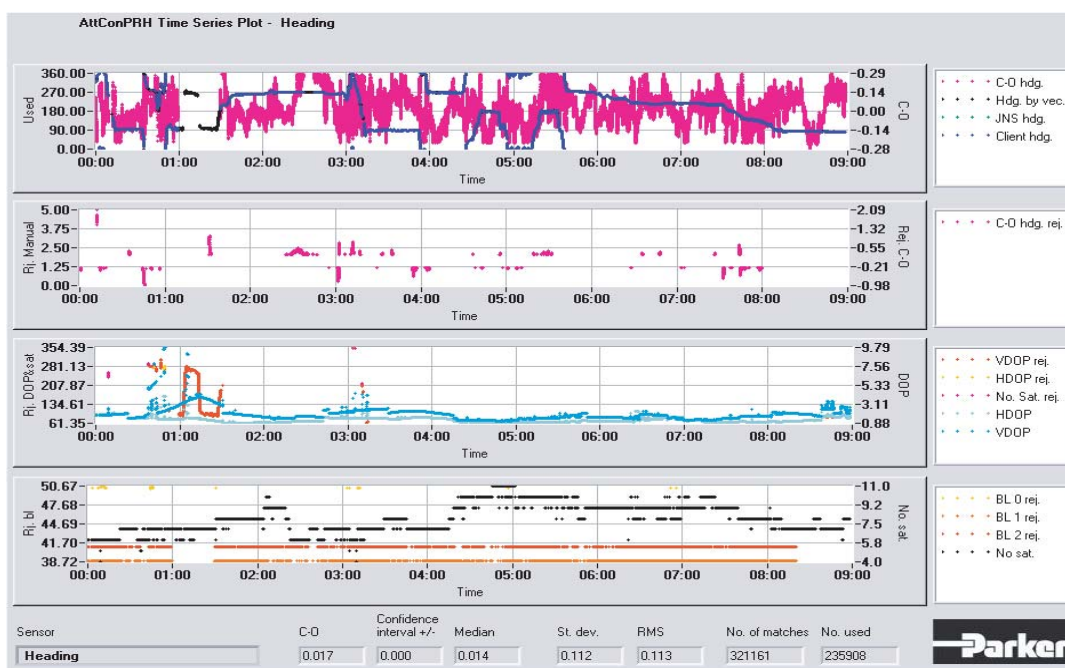


Key features

- Heading calibration
- GPS Health check

Parker Heading Calibration

Parker Maritime AS is using a Javad JNS HD2 L1/L2 GPS / Glonass based heading and pitch system to check the heading devices on vessels. In combination with a special in-house developed software we offer an efficient way of checking the heading devices. The system is easy to deploy and works independently of onshore reference points. Parker Maritime AS also offers a vessel GPS "health-check".

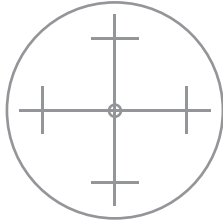


- **GPS antennas:** 2 GPS antennas will be mounted on the vessel. The locations will be determined depending on the requirement of any additional calibrations, e.g. roll/pitch...
- **Data collection:** Data is acquired from the vessel heading devices and the GPS system.
- **Data calculation:** Data from the vessel devices and the Javad GPS system are imported to the Parker AttCon program and C-O is calculated.
- **Data presentation:** Preliminary results can be presented for the customer immediately. A final report is normally issued the day after.
- **Technical data GPS:** Javad JNS HD2 2x20 channels L1/L2. Heading 0.15°/L RMS, roll/pitch 0.3°/L RMS, where L is antenna separation in meters.
- **Accuracies:** Accuracy expectations depend mainly on antenna positions, undiscovered time discrepancies and multipath.
- **Health-check:** The vessel GPS-antennas will be surveyed from onshore reference points and coordinates given in the required coordinate system and datum.



Vessel reference system

Establishment of a coordinate reference system

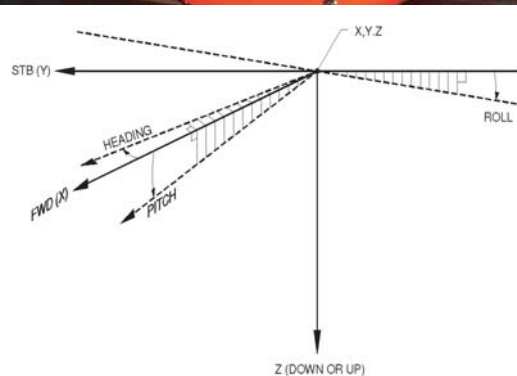
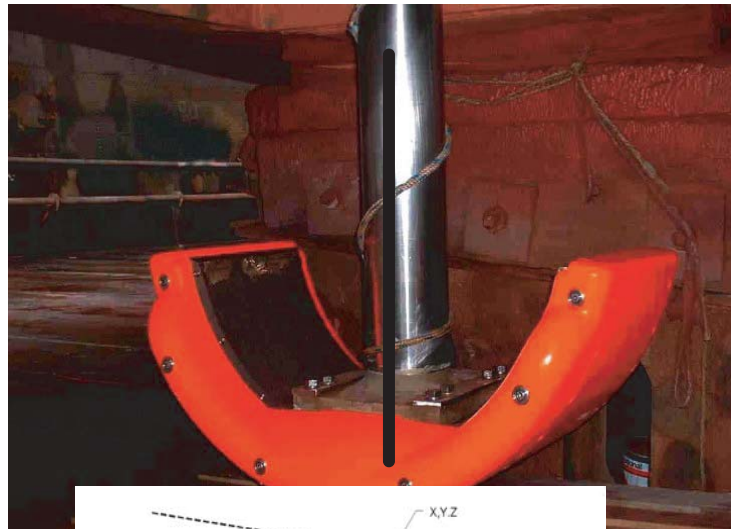


Key features

- Common coordinate system
- Determination of roll / pitch and heading of survey devices

High precision determination

Parker Maritime AS is using high precision survey equipment to establish a common coordinate reference system onboard the vessel. Thereafter, the position, heading, roll and pitch of the echosounders, motion sensors, antennas and other survey devices can be determined using this reference system. Permanent reference points and lines can be established in order to calibrate the ROV gyro relative to the vessel gyros as well as for future use. For health check and Gyro calibration please check on the reverse side of this brochure.



sellihca
empowered by Achilles



FPAL
empowered by Achilles



Achilles JQS
empowered by Achilles

Parker Maritime AS
Heiamyra 1
4033 Stavanger
NORWAY

telephone: +47 51 70 85 00
telefax: +47 51 70 85 01
email: post@parkermaritime.no
www.parkermaritime.no

Contact:
Odd Rune Olden
mob. +47 91 59 59 09